

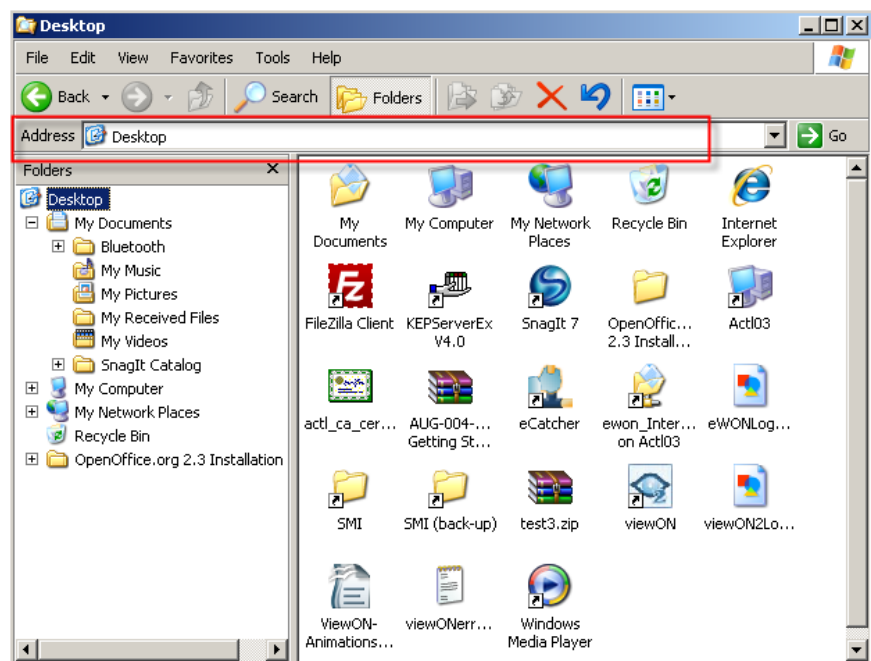
KB Name	Configure your eWON using FTP		
Type	KB		
Since revision	NA		
KB Number	KB-0020-0	Build	84
Mod date	17. Oct 2008		

Configure your eWON using FTP

When you need to configure several eWONs at the same time or make a repeated action you can use the eWON web interface. But you can also make changes on your eWON using FTP. This document will precisely help you configure your eWON using FTP. To do so, you will have to use an FTP client. If you do not have one, then you can use *Windows Explorer*, for example.

1 Connect to the eWON FTP Server

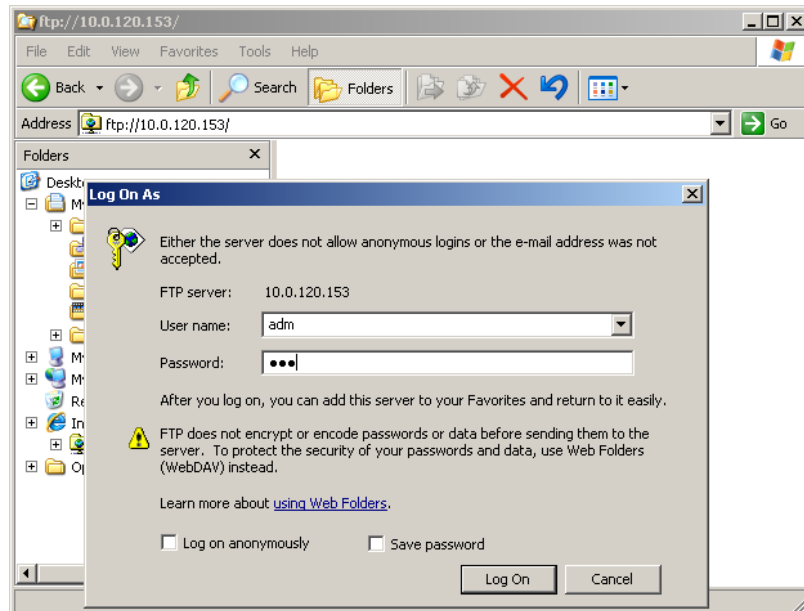
First of all open *Windows Explorer* (or your FTP client software).



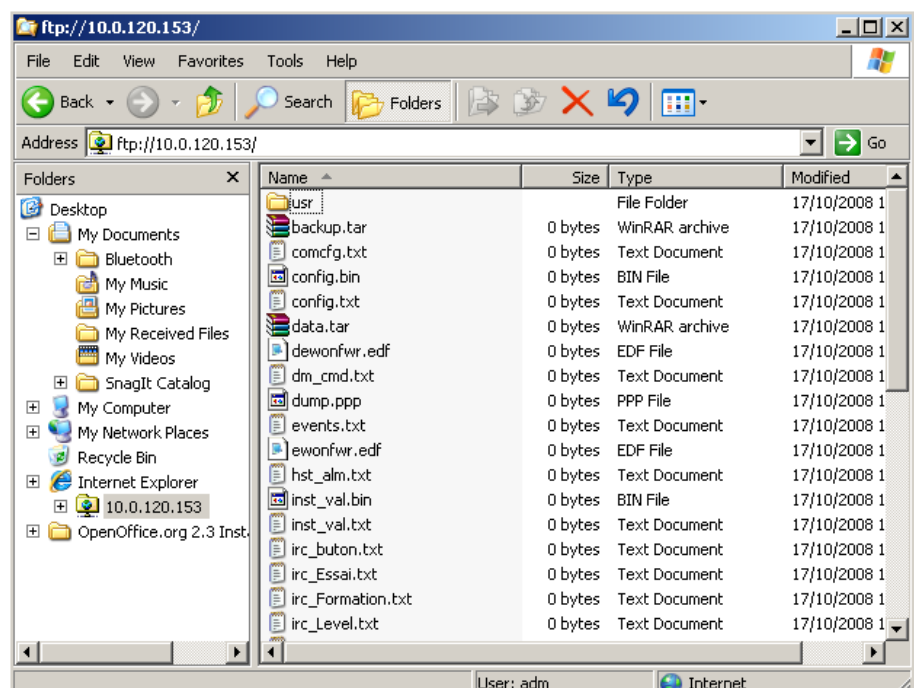
In the address field, type `ftp:// your eWON IP address`. A window asking your eWON user *name* and *password* pops up. Insert them and click on **Log On**.

Knowledge Base Information

KB Name	Configure your eWON using FTP		
Type	KB		
Since revision	NA		
KB Number	KB-0020-0	Build	84
Mod date	17. Oct 2008		



Clicking on **Log on** will display all the files available on your eWON by FTP.



Please be aware that when you are in *Windows Explorer*, you will be able to open those files but not modify them. If you want to modify them, you will have to save them first on your PC and put them back on your eWON.

Knowledge Base Information

KB Name	Configure your eWON using FTP		
Type	KB		
Since revision	NA		
KB Number	KB-0020-0	Build	84
Mod date	17. Oct 2008		

2 Change Your eWON Configuration

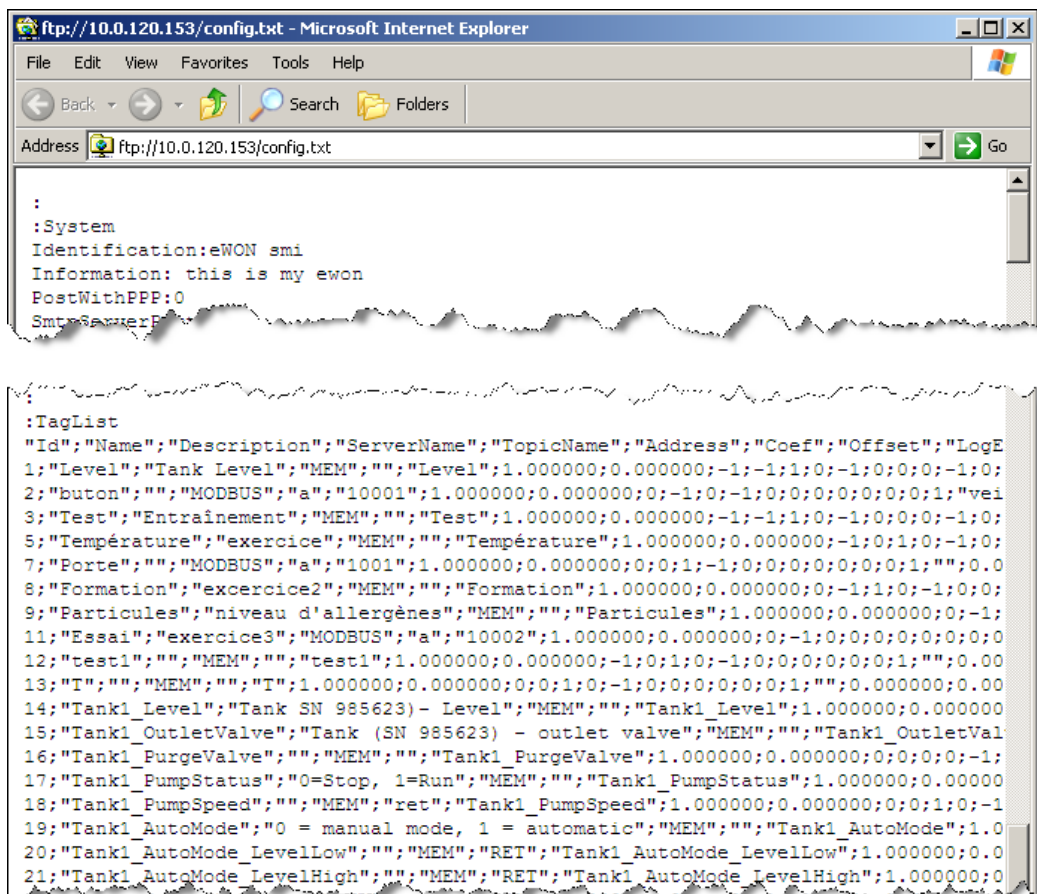
When accessing your eWON using FTP, you can see several files. The files containing all the eWON configuration are: the **config.txt**, **comcfg.txt** and the **program.bas**.

The folder called **\usr** lists all the personal data that you have entered in your eWON. The other files hold information like historical alarm data, historical data or diagnostic.

2.1 Config.txt

The **config.txt** contains the general configuration of your eWON, information on the I/O servers, the Tags and the user(s).

Hereafter an example of an eWON **config.txt** page.



```

:
:System
Identification:eWON smi
Information: this is my ewon
PostWithPPP:0
SmtServerP...

:TagList
"Id";"Name";"Description";"ServerName";"TopicName";"Address";"Coef";"Offset";"LogE
1;"Level";"Tank Level";"MEM";"";"Level";1.000000;0.000000;-1;-1;1;0;-1;0;0;0;-1;0;
2;"buton";"";"MODBUS";"a";"10001";1.000000;0.000000;0;-1;0;-1;0;0;0;0;0;0;1;"vei
3;"Test";"Entrainement";"MEM";"";"Test";1.000000;0.000000;-1;-1;1;0;-1;0;0;0;-1;0;
5;"Température";"exercice";"MEM";"";"Température";1.000000;0.000000;-1;0;1;0;-1;0;
7;"Porte";"";"MODBUS";"a";"1001";1.000000;0.000000;0;0;1;-1;0;0;0;0;0;0;1;"0.0
8;"Formation";"exercice2";"MEM";"";"Formation";1.000000;0.000000;0;-1;1;0;-1;0;0;
9;"Particules";"niveau d'allergènes";"MEM";"";"Particules";1.000000;0.000000;0;-1;
11;"Essai";"exercice3";"MODBUS";"a";"10002";1.000000;0.000000;0;-1;0;0;0;0;0;0;0
12;"test1";"";"MEM";"";"test1";1.000000;0.000000;-1;0;1;0;-1;0;0;0;0;0;1;"0.00
13;"T";"";"MEM";"";"T";1.000000;0.000000;0;0;1;0;-1;0;0;0;0;0;0;1;"0.000000;0.00
14;"Tank1_Level";"Tank SN 985623)- Level";"MEM";"";"Tank1_Level";1.000000;0.000000
15;"Tank1_OutletValve";"Tank (SN 985623) - outlet valve";"MEM";"";"Tank1_OutletVal
16;"Tank1_PurgeValve";"";"MEM";"";"Tank1_PurgeValve";1.000000;0.000000;0;0;0;0;-1;
17;"Tank1_PumpStatus";"0=Stop, 1=Run";"MEM";"";"Tank1_PumpStatus";1.000000;0.000000
18;"Tank1_PumpSpeed";"";"MEM";"ret";"Tank1_PumpSpeed";1.000000;0.000000;0;0;1;0;-1
19;"Tank1_AutoMode";"0 = manual mode, 1 = automatic";"MEM";"";"Tank1_AutoMode";1.0
20;"Tank1_AutoMode_LevelLow";"";"MEM";"RET";"Tank1_AutoMode_LevelLow";1.000000;0.0
21;"Tank1_AutoMode_LevelHigh";"";"MEM";"RET";"Tank1_AutoMode_LevelHigh";1.000000;0

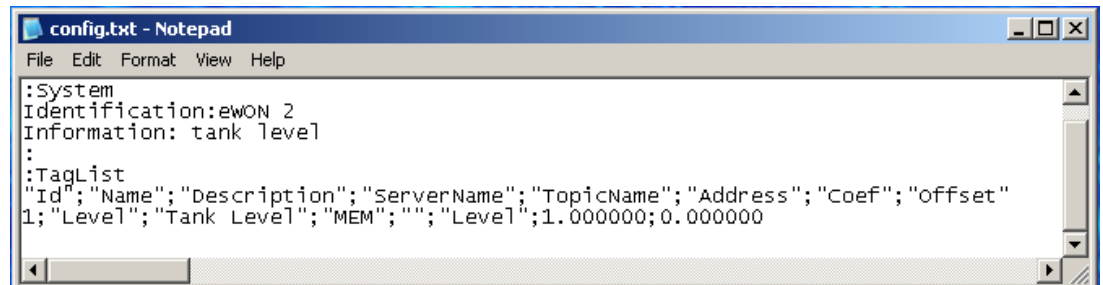
```

From the **config.txt**, you are able to modify, the identification, the information, but also, change parameters of Tags directly instead of using the eWON web interface. Be aware that you can modify and keep one part of the **config.txt** and apply it to your eWON. For instance, you can change features in the **System** section only and send only those modifications to your eWON.

Knowledge Base Information

KB Name	Configure your eWON using FTP		
Type	KB		
Since revision	NA		
KB Number	KB-0020-0	Build	84
Mod date	17. Oct 2008		

Hereunder an example of a modified **config.txt**:



```

:System
Identification:ewON 2
Information: tank level
:
:TagList
"Id";"Name";"Description";"ServerName";"TopicName";"Address";"Coef";"offset"
1;"Level";"Tank Level";"MEM";"";"Level";1.000000;0.000000
  
```

IMPORTANT



When modifying features in the **config.txt**, make sure you follow the structure (*System/Tag List/User List*).

NOTE



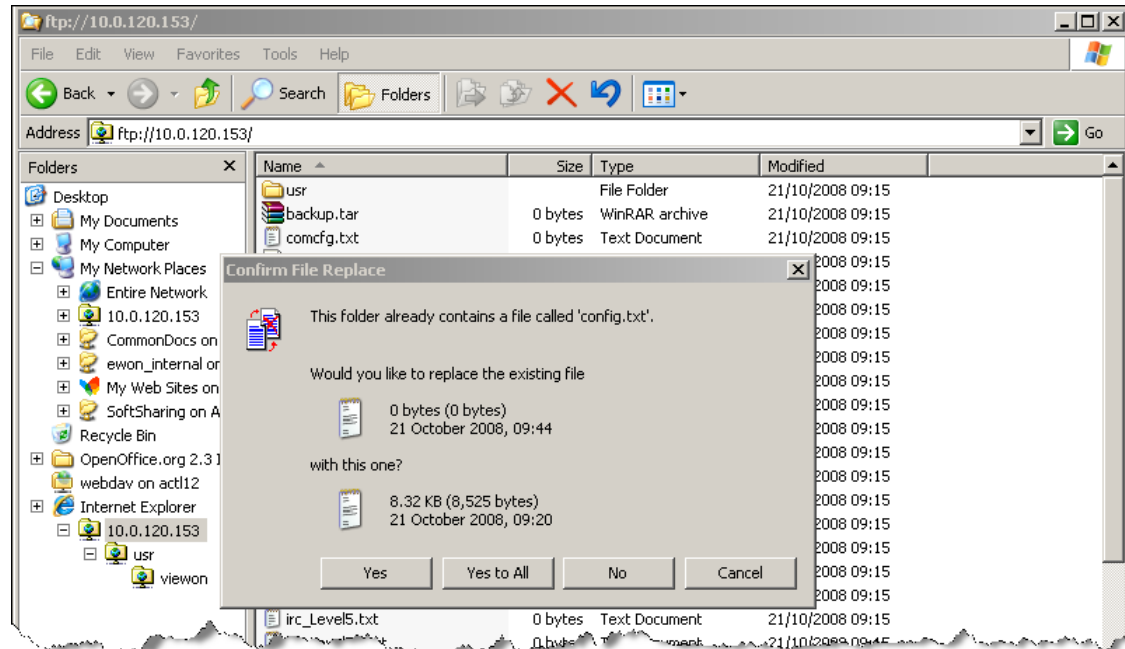
Changes made in the **config.txt** are appended without deleting anything in the eWON configuration.

■ Apply your changes (config.txt)

In order to apply changes to your eWON, you will have to put the file in the eWON root. To do so, it is quite easy. Simply select the modified **config.txt** file and drag and drop it in the FTP directory. This command will make a window pop up.

Knowledge Base Information

KB Name	Configure your eWON using FTP		
Type	KB		
Since revision	NA		
KB Number	KB-0020-0	Build	84
Mod date	17. Oct 2008		



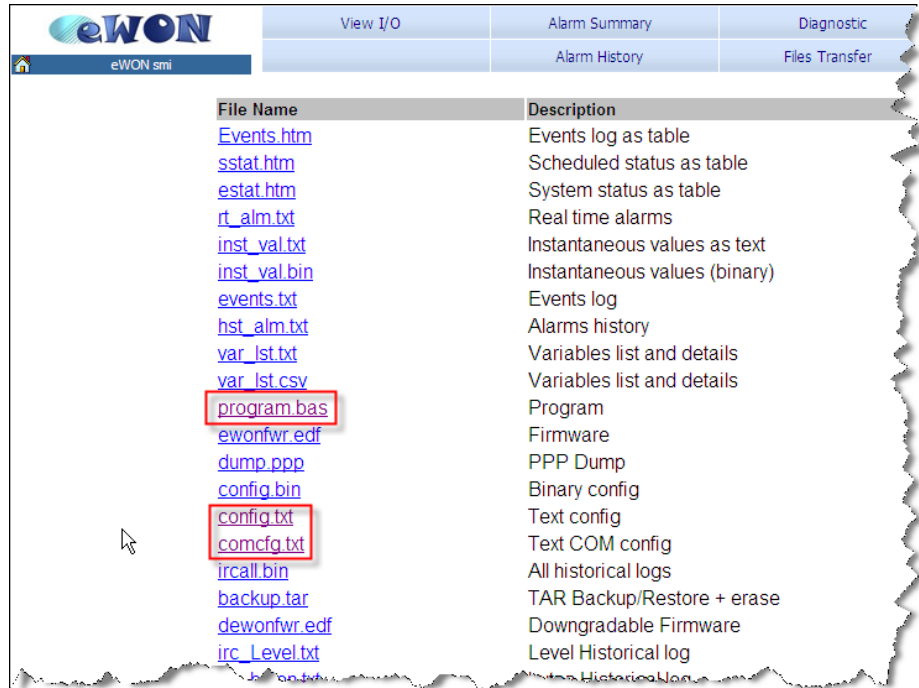
You will be asked to replace the existing file. Click on **Yes**. All the modifications are sent to the eWON.

To check if your changes have been applied, open your eWON web interface. In the main menu, click on **Files Transfer**.

Knowledge Base Information

KB Name	Configure your eWON using FTP		
Type	KB		
Since revision	NA		
KB Number	KB-0020-0	Build	84
Mod date	17. Oct 2008		

The following page will open:



File Name	Description
Events.htm	Events log as table
sstat.htm	Scheduled status as table
estat.htm	System status as table
rt_alm.txt	Real time alarms
inst_val.txt	Instantaneous values as text
inst_val.bin	Instantaneous values (binary)
events.txt	Events log
hst_alm.txt	Alarms history
var_lst.txt	Variables list and details
var_lst.csv	Variables list and details
program.bas	Program
ewonfwr.edf	Firmware
dump.ppp	PPP Dump
config.bin	Binary config
config.txt	Text config
comcfg.txt	Text COM config
ircall.bin	All historical logs
backup.tar	TAR Backup/Restore + erase
dewonfwr.edf	Downgradable Firmware
irc_Level.txt	Level Historical log

If you click on **config.txt**, the eWON configuration (including the changes that you have made using FTP) will be displayed.

NOTE



If the changes that you have made do not appear in the eWON, it means that an error occurred during the import. To have more information about the problem, click on *Diagnostic* and then on *Event Log*.

2.2 Comcfg.txt

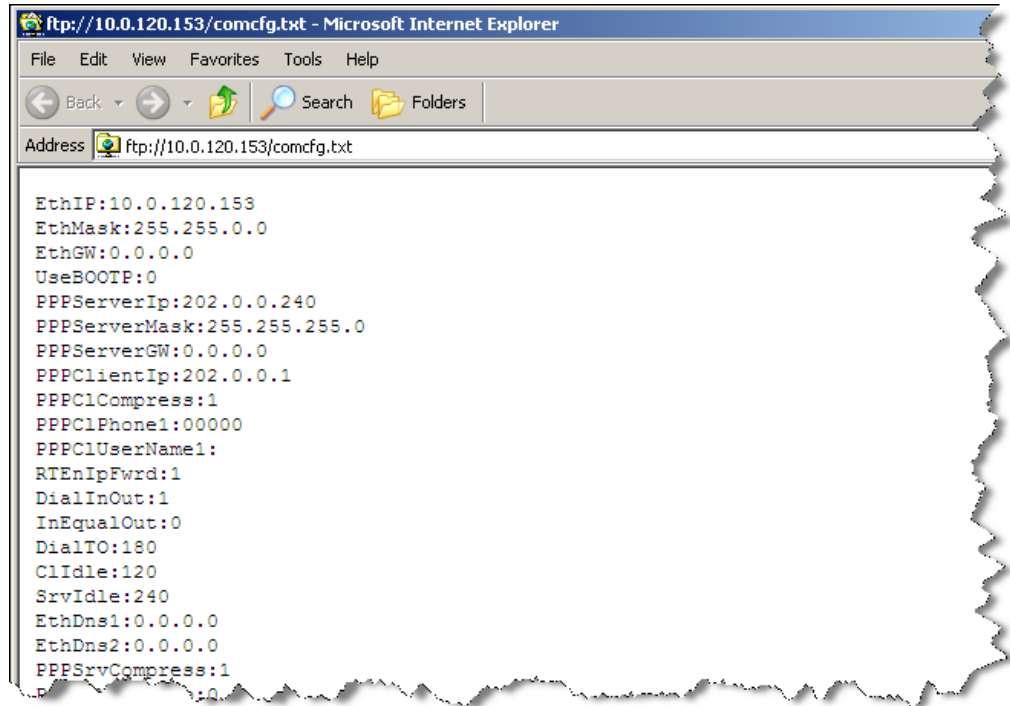
The **comcfg.txt** contains all the information concerning the communication setup: your eWON's IP address, the Internet connection, the VPN settings, etc. Using this file you can, for example, change the IP address of your eWON. To access the **comcfg.txt** file, proceed as for the **config.txt**.

By FTP get the file from the eWON root.

Knowledge Base Information

KB Name	Configure your eWON using FTP		
Type	KB		
Since revision	NA		
KB Number	KB-0020-0	Build	84
Mod date	17. Oct 2008		

Hereafter, an example of an eWON **comcfg.txt** file:



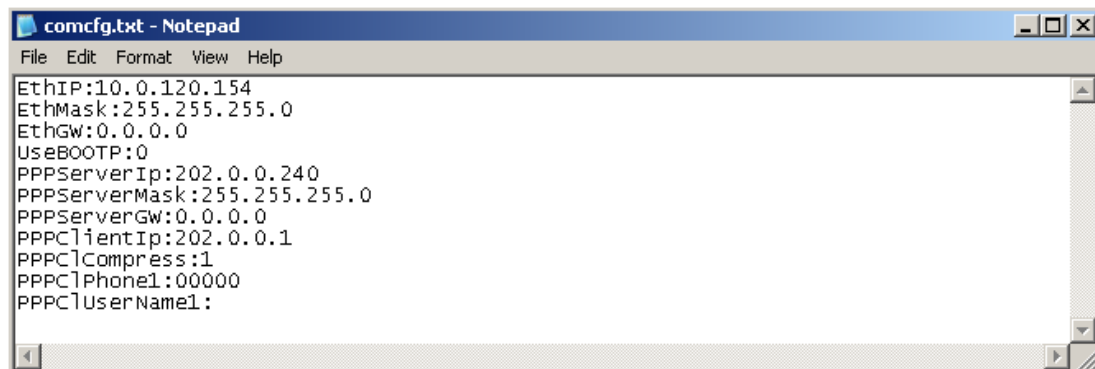
```

EthIP:10.0.120.153
EthMask:255.255.0.0
EthGW:0.0.0.0
UseBOOTP:0
PPPServerIp:202.0.0.240
PPPServerMask:255.255.255.0
PPPServerGW:0.0.0.0
PPPClntIp:202.0.0.1
PPPClCompress:1
PPPClPhone1:00000
PPPClUserName1:
RTEnIpFwrd:1
DialInOut:1
InEqualOut:0
DialTO:180
ClIdle:120
SrvIdle:240
EthDns1:0.0.0.0
EthDns2:0.0.0.0
PPPSrvCompress:1

```

Be aware that you can modify and keep one part of the **comcfg.txt** and apply it to your eWON. For instance, you can change only some features and send the modifications to your eWON. As they are appended, you will not delete anything in your eWON.

Here is an example of a modified **comcfg.txt**:



```

comcfg.txt - Notepad
File Edit Format View Help
EthIP:10.0.120.154
EthMask:255.255.255.0
EthGW:0.0.0.0
UseBOOTP:0
PPPServerIp:202.0.0.240
PPPServerMask:255.255.255.0
PPPServerGW:0.0.0.0
PPPClntIp:202.0.0.1
PPPClCompress:1
PPPClPhone1:00000
PPPClUserName1:

```

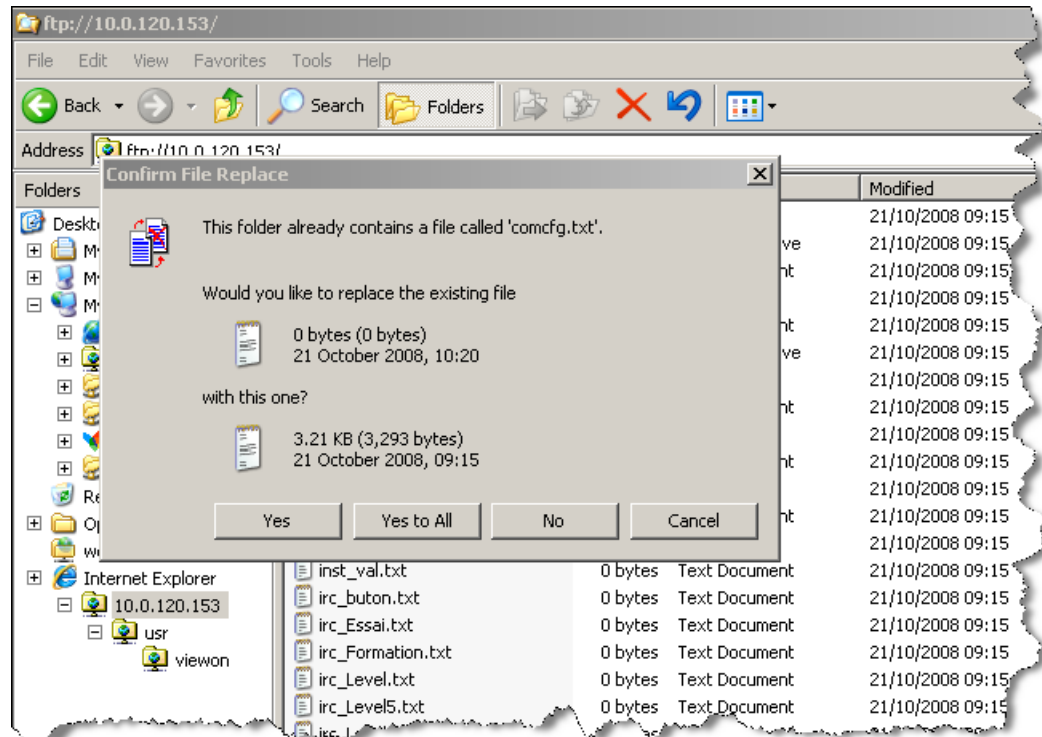
■ Apply your changes (comcfg.txt)

In order to apply changes to your eWON, you will have to put the file in the eWON root. To do so, it is quite easy. Simply select the modified **comcfg.txt** and drag and drop it in the eWON

Knowledge Base Information

KB Name	Configure your eWON using FTP		
Type	KB		
Since revision	NA		
KB Number	KB-0020-0	Build	84
Mod date	17. Oct 2008		

FTP directory. This command will make a window pop up.



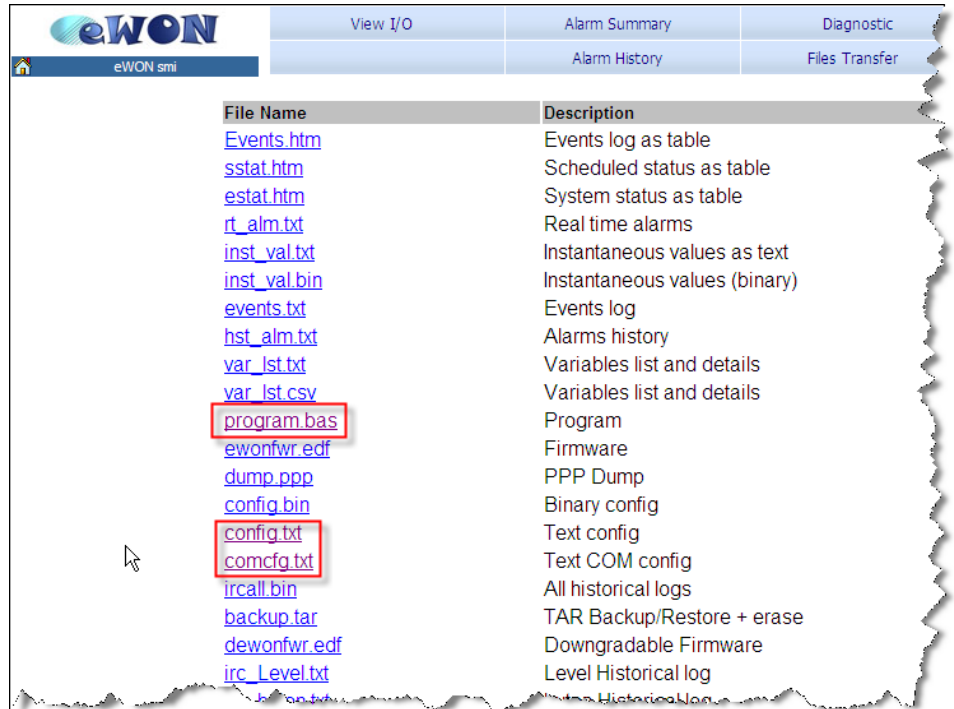
You will be asked to replace the existing file. Click on **Yes**. All the modifications are sent to the eWON.

To check if your changes have been applied, open your eWON web interface. In the main menu, click on **Files Transfer**.

Knowledge Base Information

KB Name	Configure your eWON using FTP		
Type	KB		
Since revision	NA		
KB Number	KB-0020-0	Build	84
Mod date	17. Oct 2008		

The following page will open:



eWON sml			
View I/O		Alarm Summary	Diagnostic
		Alarm History	Files Transfer
File Name	Description		
Events.htm	Events log as table		
sstat.htm	Scheduled status as table		
estat.htm	System status as table		
rt_alm.txt	Real time alarms		
inst_val.txt	Instantaneous values as text		
inst_val.bin	Instantaneous values (binary)		
events.txt	Events log		
hst_alm.txt	Alarms history		
var_lst.txt	Variables list and details		
var_lst.csv	Variables list and details		
program.bas	Program		
ewonfwr.edf	Firmware		
dump.ppp	PPP Dump		
config.bin	Binary config		
config.txt	Text config		
comcfg.txt	Text COM config		
ircall.bin	All historical logs		
backup.tar	TAR Backup/Restore + erase		
dewonfwr.edf	Downgradable Firmware		
irc_Level.txt	Level Historical log		
...	...		

If you click on **comcfg.txt**, the eWON configuration (including the changes that you have made using FTP) will be displayed.

NOTE Changes made in the **comcfg.txt** are appended without deleting anything in the eWON configuration.



IMPORTANT It is better to reboot your eWON when you have configured it using FTP. Some Com modifications need a reboot.



NOTE If the changes that you have made do not appear in the eWON, it means that an error occurred during the import. To have more information about the problem, click on *Diagnostic* and then on *Event Log*.



Knowledge Base Information

KB Name	Configure your eWON using FTP		
Type	KB		
Since revision	NA		
KB Number	KB-0020-0	Build	84
Mod date	17. Oct 2008		

2.3 Program.bas

The **program.bas** contains the Basic program that you have created in your eWON. By FTP get the file from the eWON root.

Hereafter an example of an eWON **program.bas** page:

```

program[1].bas - Notepad
File Edit Format View Help
Rem --- eWON start section: viewON2
Rem --- eWON user (start)
Tank1:
Rem Tank1 Level
Tanklevel = Tanklevel + (((Tank1_PumpStatus@ * Tank1_PumpSpeed@) * TankFillFactor) - (Tank1_outlet
Print Tanklevel; Tank1_PumpStatus@ * Tank1_PumpSpeed@

If Tanklevel > 2000 Then
    Tanklevel = 2000
ELSE
    If Tanklevel < 0 Then
        Tanklevel = 0
    Endif
Endif
Tank1_Level@ = Tanklevel

Rem Tank1 mode automatic
If Tank1_AutoMode@ = 1 Then
    If Tank1_Level@ >= Tank1_AutoMode_LevelHigh@ Then
        Tank1_PumpStatus@ = 0
        Tank1_outletValve@ = 1
    Else
        If Tank1_Level@ <= Tank1_AutoMode_LevelLow@ Then
            Tank1_PumpStatus@ = 1
            Tank1_outletValve@ = 0
        Endif
    Endif
Endif
End
ModeAutoStart:
If Tank1_AutoMode@ = 1 Then
    Tank1_PumpStatus@ = 1
    Tank1_outletValve@ = 0
Endif

```

IMPORTANT



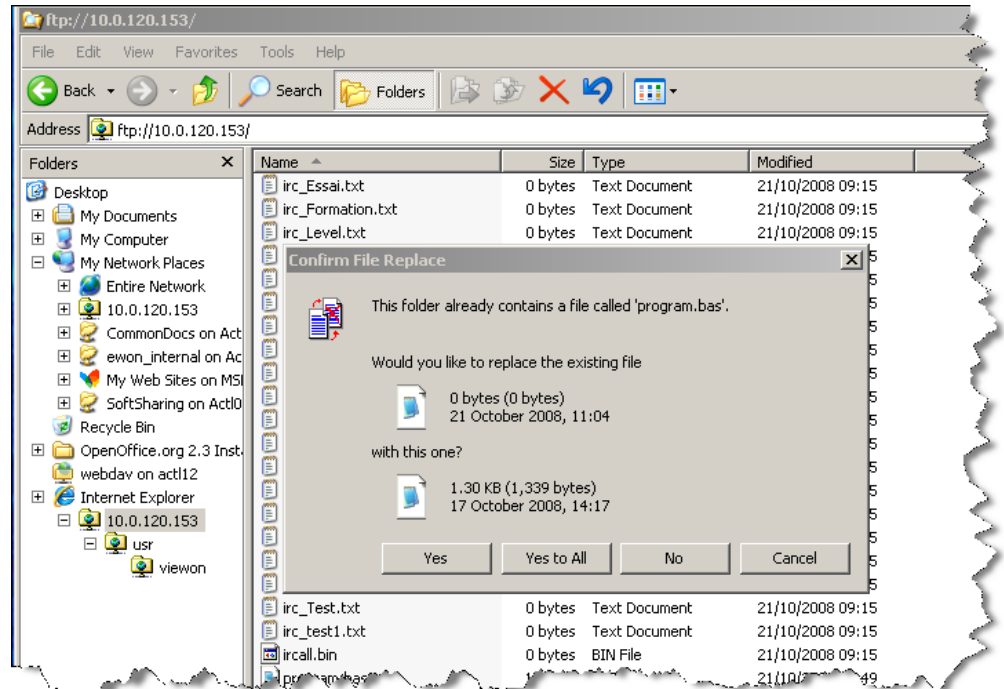
Changes made in the **program.bas** file are not appended, but they replace the original program of your eWON as the changes made in the **program.bas** overwrite the previous file. So, if you delete something in the **program.bas** it **will** be deleted in your eWON.

■ Apply your changes (program.bas)

In order to apply the modified program to your eWON, you will have to put the file in the eWON root. To do so, it is quite easy. Simply select the modified **program.bas** and drag and drop it in the eWON FTP directory. This command will make a window pop up.

Knowledge Base Information

KB Name	Configure your eWON using FTP		
Type	KB		
Since revision	NA		
KB Number	KB-0020-0	Build	84
Mod date	17. Oct 2008		



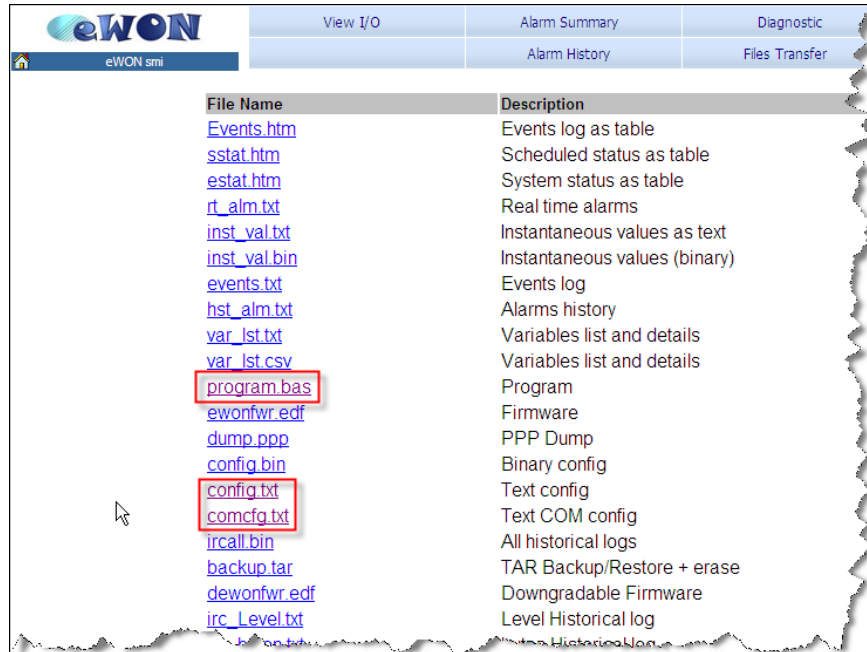
You will be asked to replace the existing file. Click on **Yes**. All the modifications are sent to the eWON.

To check if your changes have been applied, open your eWON web interface. In the main menu, click on **Files Transfer**.

Knowledge Base Information

KB Name	Configure your eWON using FTP		
Type	KB		
Since revision	NA		
KB Number	KB-0020-0	Build	84
Mod date	17. Oct 2008		

The following page will open:



eWON		View I/O	Alarm Summary	Diagnostic
eWON smi			Alarm History	Files Transfer
File Name	Description			
Events.htm	Events log as table			
sstat.htm	Scheduled status as table			
estat.htm	System status as table			
rt_alm.txt	Real time alarms			
inst_val.txt	Instantaneous values as text			
inst_val.bin	Instantaneous values (binary)			
events.txt	Events log			
hst_alm.txt	Alarms history			
var_lst.txt	Variables list and details			
var_lst.csv	Variables list and details			
program.bas	Program			
ewonfwr.edf	Firmware			
dump.ppp	PPP Dump			
config.bin	Binary config			
config.txt	Text config			
comcfg.txt	Text COM config			
ircall.bin	All historical logs			
backup.tar	TAR Backup/Restore + erase			
dewonfwr.edf	Downgradable Firmware			
irc_Level.txt	Level Historical log			

If you click on **program.bas**, the new program will be displayed.

NOTE



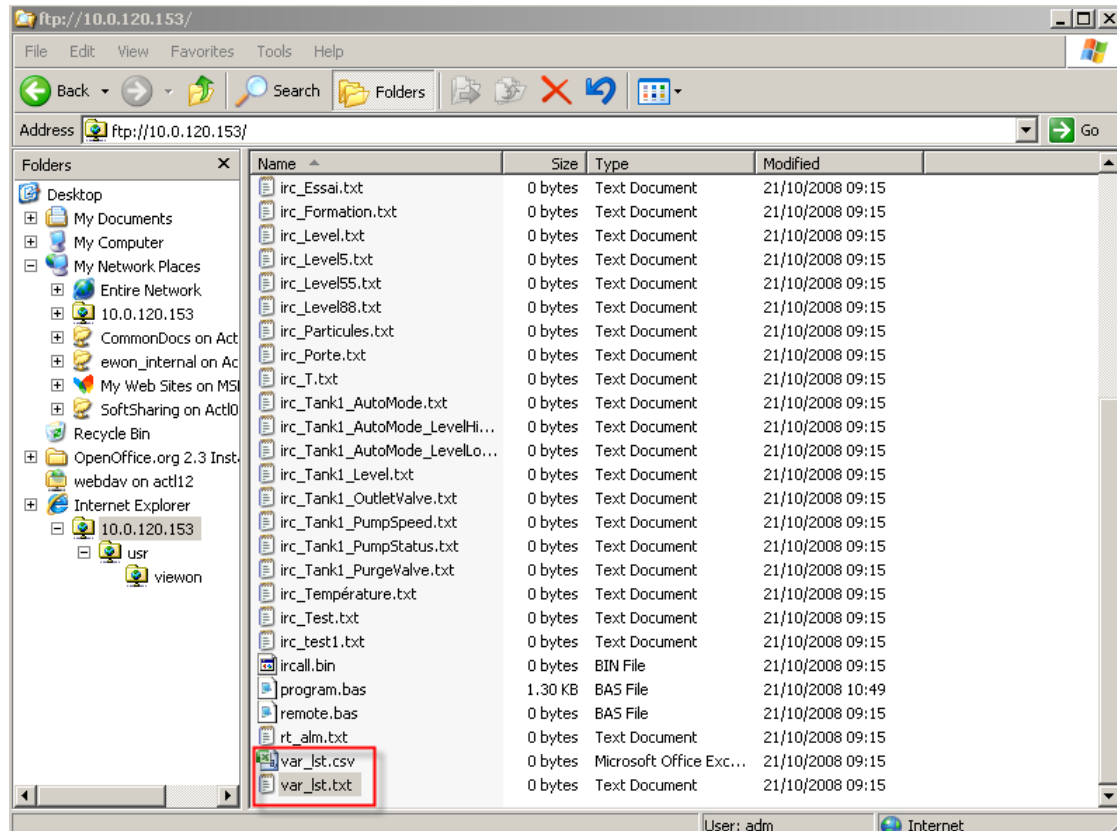
If the changes that you have made do not appear in the eWON, it means that an error occurred during the import. To have more information about the problem, click on *Diagnostic* and then on *Event Log*.

Knowledge Base Information

KB Name	Configure your eWON using FTP		
Type	KB		
Since revision	NA		
KB Number	KB-0020-0	Build	84
Mod date	17. Oct 2008		

2.4 Var-list.csv / Var-list.txt

In the FTP page of your eWON, you will also find 2 other files: **var-lst.csv** and **var-lst.txt**.

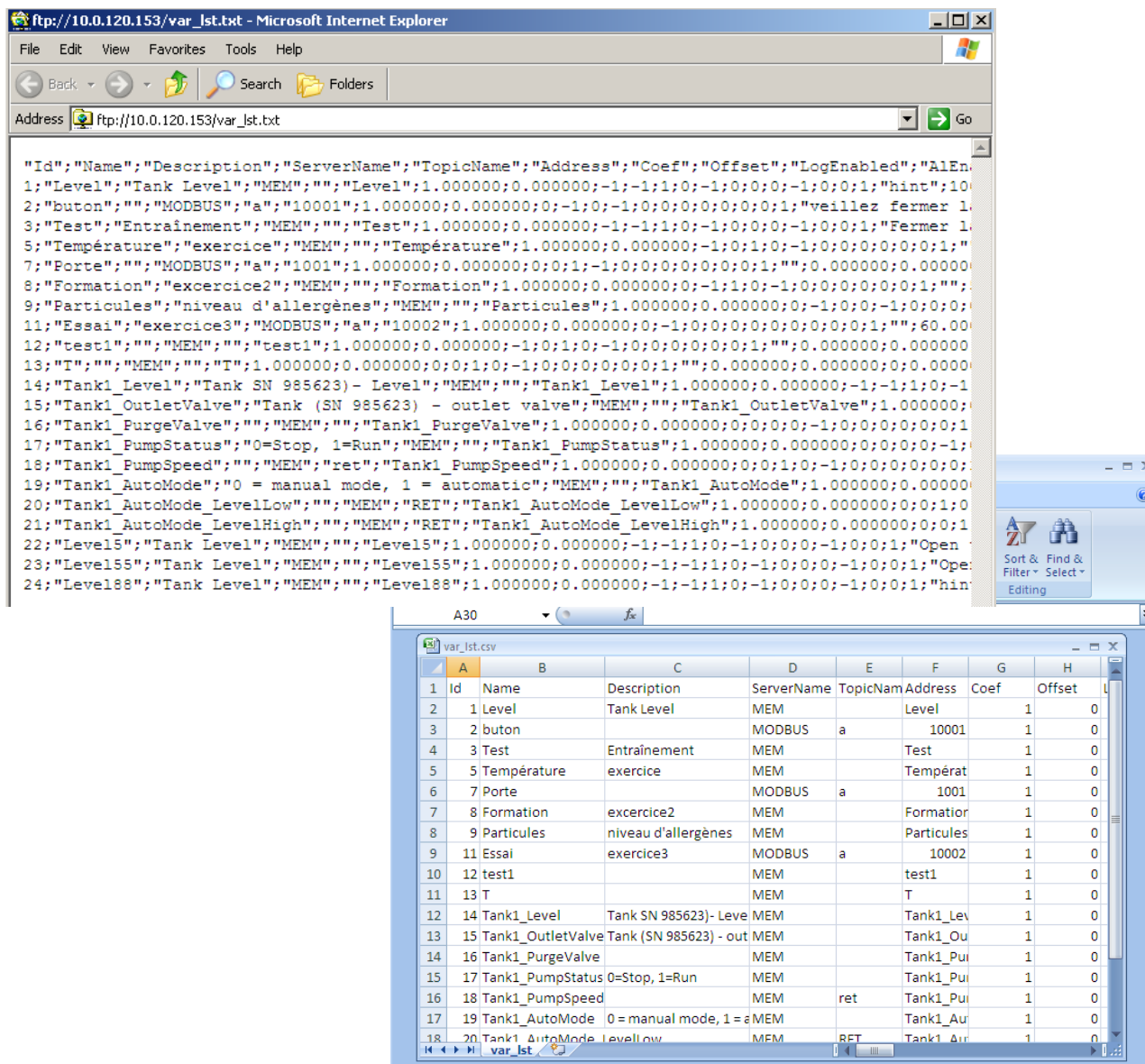


Both files contain the same information: the Tags parameters that you have introduced in your eWON, only the extension is different. Actually, in those files, you will find exactly the same information as in the **Tag List** section of the **config.txt**.

Knowledge Base Information

KB Name	Configure your eWON using FTP		
Type	KB		
Since revision	NA		
KB Number	KB-0020-0	Build	84
Mod date	17. Oct 2008		

Hereafter, an example of a **var-1st.txt** page and a **var-1st.csv** (opened with Excel):



The screenshot shows two windows. The top window is a Microsoft Internet Explorer browser displaying the content of the file `ftp://10.0.120.153/var_1st.txt`. The content is a text file with a structured format for defining tags and their properties. The bottom window is an Excel spreadsheet showing the content of the file `var_1st.csv`, which is a CSV representation of the same data. The CSV file has columns for ID, Name, Description, ServerName, TopicName, Address, Coef, and Offset.

ID	Name	Description	ServerName	TopicName	Address	Coef	Offset
1	Level	Tank Level	MEM		Level	1	0
2	buton		MODBUS	a	10001	1	0
3	Test	Entraînement	MEM		Test	1	0
4	5	Température	MEM		Températ	1	0
5	7	Porte	MODBUS	a	1001	1	0
6	8	Formation	MEM		Formation	1	0
7	9	Particules	MEM		Particules	1	0
8	11	Essai	MODBUS	a	10002	1	0
9	12	test1	MEM		test1	1	0
10	13	T	MEM		T	1	0
11	14	Tank1_Level	MEM		Tank1_Lev	1	0
12	15	Tank1_OutletValve	MEM		Tank1_Ou	1	0
13	16	Tank1_PurgeValve	MEM		Tank1_Pur	1	0
14	17	Tank1_PumpStatus	MEM		Tank1_Pu	1	0
15	18	Tank1_PumpSpeed	MEM	ret	Tank1_Pu	1	0
16	19	Tank1_AutoMode	MEM		Tank1_Au	1	0
17	20	Tank1_AutoMode_LevelLow	MEM	RET	Tank1_Au	1	0

As you can see, in our example, there are several Tags in the eWON. The **var-1st.txt** contains information about the name of the Tags, the IO server name, the address, etc. You can modify whatever you want (only a Tag or a part of the columns, the other parameters will then be set to default values) but make sure you respect the structure. Even if the lay-out seems unclear, the **var-1st.txt** works like there were columns.

For instance, you cannot delete the Tags description without erasing the **Description** column. Please be aware that when you are in *Windows Explorer*, you will be able to open this file, but not modify it. You will have to save it first on your PC if you want to configure your eWON through the **var-1st.txt**.

Knowledge Base Information

KB Name	Configure your eWON using FTP		
Type	KB		
Since revision	NA		
KB Number	KB-0020-0	Build	84
Mod date	17. Oct 2008		

Here is an example of a modified **var-1st** file:



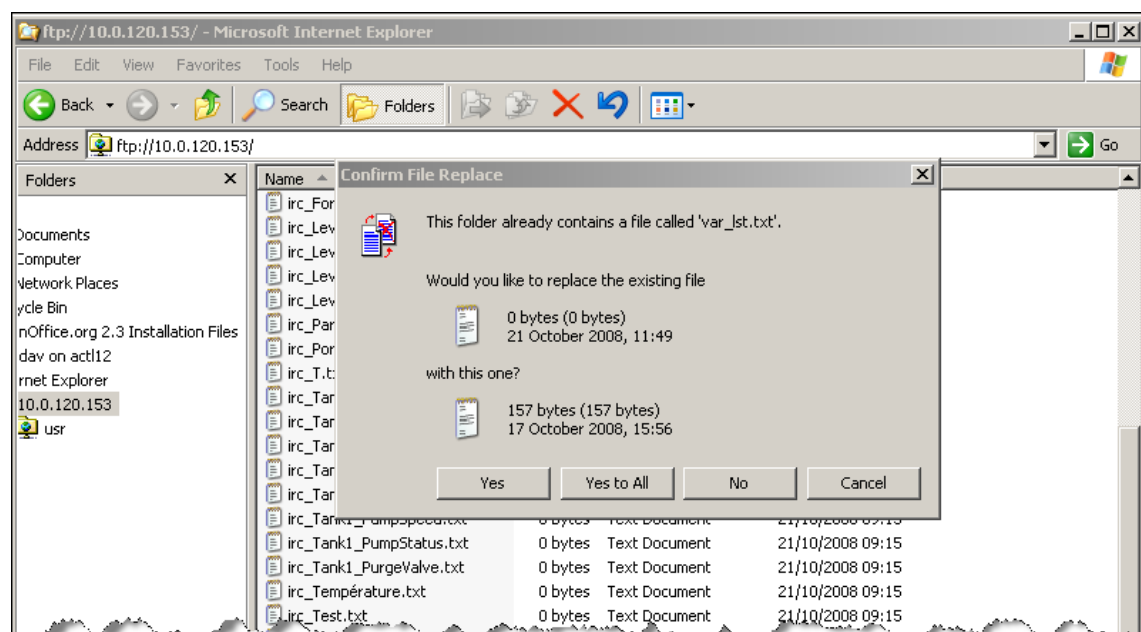
```

var_1st.txt - Notepad
File Edit Format View Help
"Id";"Name";"ServerName";"TopicName";"Address";"AlHint"
1;"Level";"Tank Level";"MEM";"";"Level";"hint"
1;"Level88";"Tank Level";"MEM";"";"Level";"hint 4"
  
```

NOTE When applying a file on the eWON by ftp, the ID number is not taken into account by the eWON. Only the **Name** column will be taken into account to identify a Tag. For further information about the **var-1st** file, please refer to our Technical note (TN12.pdf) on our website : <http://support.ewon.biz>

■ Apply your changes (var-1st.csv / var-1st.txt)

In order to apply the changes to your eWON, you will have to put the file in the eWON root. To do so, it is quite easy. Simply select the modified **var-1st.csv** / **var-1st.txt** and drag and drop it in the eWON FTP directory. This command will make a window pop up.




Knowledge Base Information



KB Name	Configure your eWON using FTP		
Type	KB		
Since revision	NA		
KB Number	KB-0020-0	Build	84
Mod date	17. Oct 2008		

To check if your changes have been applied, open your eWON web interface. In the main menu, click on **Files Transfer**.



View I/O	Alarm Summary	Diagnostic	Configuration
	Alarm History	Files Transfer	Log off 

The following page will open:

 eWON smi	View I/O	Alarm Summary	Diagnostic	Configuration
		Alarm History	Files Transfer	Log off 

File Name	Description
Events.htm	Events log as table
sstat.htm	Scheduled status as table
estat.htm	System status as table
rt_alm.txt	Real time alarms
inst_val.txt	Instantaneous values as text
inst_val.bin	Instantaneous values (binary)
events.txt	Events log
hst_alm.txt	Alarms history
var_lst.txt	Variables list and details
var_lst.csv	Variables list and details
program.bas	Program
ewonfwr.edf	Firmware
dump.ppp	PPP Dump
config.bin	Binary config
config.txt	Text config
comcfg.txt	Text COM config
ircall.bin	All historical logs

In this page you will see the **var-lst.txt** / **var-lst.csv** files. If you click on one of them, the Tags configuration (including the changes that you have made using FTP) will be displayed.

NOTE



If the changes that you have made do not appear in the eWON, it means that an error occurred during the import. To have more information, click on *Diagnostic* and then on *Event Log*.